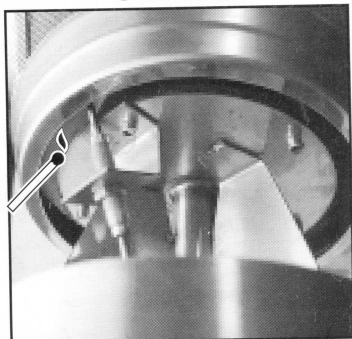


LIGHTING THE HEATER

STEP 1 TURN ON GAS SUPPLY FROM GAS / PROPANE CYLINDER

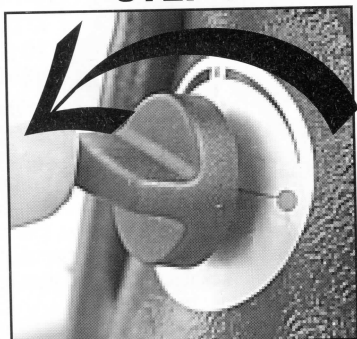
STEP 2



POSITION FLAME

Hold flame under burner head (bi) as indicated above.

STEP 3



START GAS FLOW

Push in control knob and turn anti-clockwise.

GAS WILL IGNITE

IMPORTANT: KEEP CONTROL KNOB PUSHED IN FOR AT LEAST 15 SECONDS.

This will allow the safety thermo couple devise to heat up. If the thermocouple is not heated correctly the gas supply will automatically cut off.

NB: If flame goes out for any reason wait 2 minutes and repeat step 2 + 3.

TO ADJUST HEAT – Push in control knob and turn anti-clockwise to increase heat or clockwise to reduce heat.

TURN HEATER OFF + MAKE SAFE By pushing in control knob and turning clockwise until stop. Flame will go out. TURN OFF gas supply on gas/propane cylinder.